



ATTACHMENT ADAPTER KIT

FORM NO. 34846(2-83)

PART NO. 35718

PRINTED IN USA
\$1.00

The Attachment Adapter Kit is completely factory assembled and needs only to be bolted to the advance casting of the tractor.

The assembly is bolted to the tractor with the four quick hitch studs. The quick hitch pin IS NOT a part of this kit.

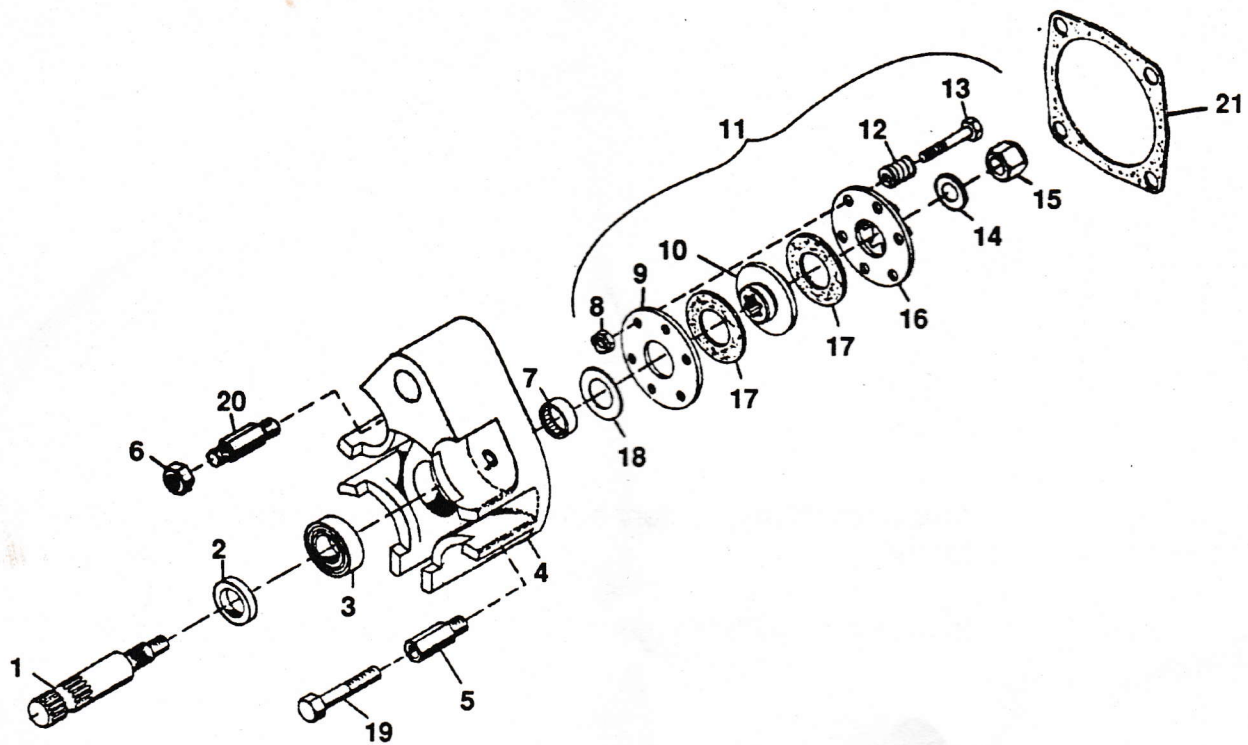
SLIP CLUTCH ADJUSTMENT

The slip clutch is designed to minimize damage when attachment strikes an immovable object and requires some maintenance.

To adjust the clutch, the Attachment Adapter assembly will first have to be removed from the tractor.

Remove any attachments from tractor and rest tractor on rear hitch to prevent loss of oil from transmission when assembly is removed. Remove the four quick hitch studs securing assembly to tractor and remove the assembly.

To adjust the clutch, loosen the six locknuts. Tighten the six bolts all the way in until the spring is collapsed. Back off each bolt 1/2 turn counter-clockwise. Lock the bolts in position with the locknuts.



ITEM NO.	PART NO.	QTY.	DESCRIPTION
1	22482	1	Shaft, Quick Hitch
2	11841	1	Ring, Retaining
3	32050	1	Bearing, Ball 1.000 x 2.000 x .562
4	34761	1	Adapter, Quick Hitch
5	22479	2	Stud, Quick Hitch
6	120378	2	Nut, Hex 1/2-13
7	11227	1	Bearing, Needle 1.000 x 1.250 x .500
8	124920	6	Nut, Lock 5/16-24
9	12868	1	Plate, Back
10	22480	1	Plate, Drive
11	22434	1	Assembly, Clutch Attachment
12	12871	6	Spring, Compression 3/4 x 2200 Lb/in
13	181618	6	Bolt, Hex 5/16-24 x 1.75
14	131016	1	Washer, Flat .656 x 1.312 x .095
15	19918	1	Nut, Lock 5/8-24
16	12867	1	Plate, Dog
17	12870	2	Washer, Friction
18	11983	1	Bearing, Thrust 1.012 x 1.750 x .125
19	180173	2	Bolt, Hex 1/2-13 x 1.0
20	24824	2	Stud, Quick Hitch
21	5056	1	Gasket, Attachment